



Welcome to  
17300 E. Britton Rd



**Horse Property ready for your Horses!**

**\$150,000**

**Size:** 1,216 sq. ft.

**Lot Size:** 10 acres

**Style:** Single Story

**Taxes:** \$750 (2008)

**Built:** 1998



**Michele Lesher**

**Phone:** 405-844-6101

**Cell:** 405-323-5251

**Email:** micheleexpress@sbcglobal.net

**Website:** www.homesinedmond.net

**Express Realty, Inc**

**Your Hometown Realtor, Finding you a place to call HOME!**

Information is deemed to be correct but not guaranteed.

**Express Realty, Inc**  
Michele Leshner

**Phone:** 405-844-6101  
**Cell:** 405-323-5251  
**Email:** micheleexpress@sbcglobal.net  
**Website:** www.homesinedmond.net

**Your Hometown Realtor, Finding you a place to call HOME!**

### Details

**Address:** 17300 E. Britton Rd **Type:** Residential **Style:** Single Story **Bedrooms:** 3 **Bathrooms:** 2  
**Garage:** Triple "Open Horse Barn" **Size:** 1,216 sq. ft. **Lot Type:** Rectangular **Lot Size:** 10 acres  
**Year Built:** 1998 "Horse arena brand new!" **Taxes:** \$750 (2008)

### Description

This property is for already prepared for someone who has or works with horses. There is huge arena, 3 horse pens, a barn with tack room, loft and 3 stalls. All items will stay with property except for personal items. The house is a manufactured home but was totally gutted and new flooring, new counter tops, new appliances and new paint were put in three years ago. The well pump is 3 years old.

There is a natural spring at the back of the 10 acres. The dirt work and fencing is amazing on this property. If you have been looking for a great horse property, this is it. Below tells you some dimensions of things on the property.

#### Dimensions

Tack Room 30' x 12'  
Horse Walker - 36' Diameter  
Round Pen - 36' Diameter  
Arena - 160' x 260'  
Horse Lots (x3) - 70' x 160'  
Lean To Shed - 12' x 24'  
Well House - 8' x 10'  
Storm Shelter - 6' x 8'

### Features

#### Interior Features

- Carpeted Floors
- Ceiling Fan
- Laundry Room
- Window Covers

#### Cooling

- Central Air

#### Exterior Finish

- Aluminum-Steel
- Frame

#### Heating

- Natural Gas

#### Roof

- Metal

#### Sewer/Water Systems

- Septic
- Well

#### View

- Pasture

#### Lot Features

- Fenced
- Garden Area
- Lawn
- Fenced Yard
- Horse Facilities
- Patio
- Front Porch
- Landscaped
- Trees / Shrubs

#### Appliances

- Dishwasher
- Hood Fan
- Refrigerator
- Garbage Disposal
- Microwave
- Gas Range
- Oven Range

**Express Realty, Inc**  
Michele Leshner

**Phone:** 405-844-6101  
**Cell:** 405-323-5251  
**Email:** micheleexpress@sbcglobal.net  
**Website:** www.homesinedmond.net

**Your Hometown Realtor, Finding you a place to call HOME!**



IMG 2445



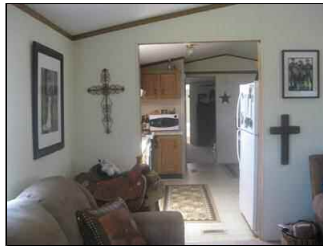
House



IMG 2218



IMG 2327



IMG 2329



IMG 2469



IMG 2470



Kitchen1



Countertops



IMG 2329



IMG 2467



IMG 2468



IMG 2462



IMG 2461



IMG 2332

**Express Realty, Inc**  
Michele Leshner

**Phone:** 405-844-6101  
**Cell:** 405-323-5251  
**Email:** micheleexpress@sbcglobal.net  
**Website:** www.homesinedmond.net

**Your Hometown Realtor, Finding you a place to call HOME!**



IMG 2495



IMG 2448



IMG 2476



IMG 2477



IMG 2478



IMG 2479



IMG 2475



IMG 2485



IMG 2484



IMG 2474



IMG 2483



TackRoom



TackRoom1



TackRoom2



IMG 2458

**Express Realty, Inc**  
Michele Leshner

**Phone:** 405-844-6101  
**Cell:** 405-323-5251  
**Email:** micheleexpress@sbcglobal.net  
**Website:** www.homesinedmond.net

**Your Hometown Realtor, Finding you a place to call HOME!**



IMG 2473



IMG 2494



IMG 2337



IMG 2218



IMG 2334